

June 17th

Leadership Notes

There will no longer be weekly staff meetings until further notice. We will be passing information down other channels, i.e. Slack, morning huddles, supervisors, crew leaders. As the need arises, a staff meeting may be scheduled. Next ALL STAFF meeting is in September.

<http://ozarksems.com/education-quizzes.php>

Have you finished your June protocol quiz yet?

Please remember to put your glucometer on the charger after your shift in Polk County.

All charts **MUST** be completed, locked, and synced within 24 hrs

More tablets are in, they are currently with IS getting set up. We are still waiting on mounts for the rest of the ambulances.

Keep an eye on the MODOT map, lots of construction going

<https://traveler.modot.org/map/>

Last minute crew requests, for LDTs, will be sent out through ESO.

If you use narcotics on a patient, fill out the narcotic waste signature in your chart. The form will accept a zero.

There is some good research indication Cincinnati only catches 14% of strokes whereas BEFAST would have caught 70% of them.

https://www.ahajournals.org/doi/full/10.1161/S_TROKEAHA.116.015169

Shout Outs

Thank you Eric and Cody for coming in and taking the Columbia VA transfer! –Comorgan

Shout out to Colby for how well he did on the MVA the other day! –Trent

Thank you to everyone that has helped cover open shifts and vacations! –Managers

Thank you Aaron and Alice for taking the Sikeston transfer, to keep both night trucks in Polk County! –Night shift

Awesome job James Pursseley on the motorcycle MVA! –Sid

Thank you Allison and Angel for taking a transfer out of CMH for us! –Comorgan

Great work on the MVA Cheryl, Adam, Colby, Alice, and Theron!

Thank you Ray for helping cover night shift in Polk County!

Thank you Ryan for covering so many night shifts!



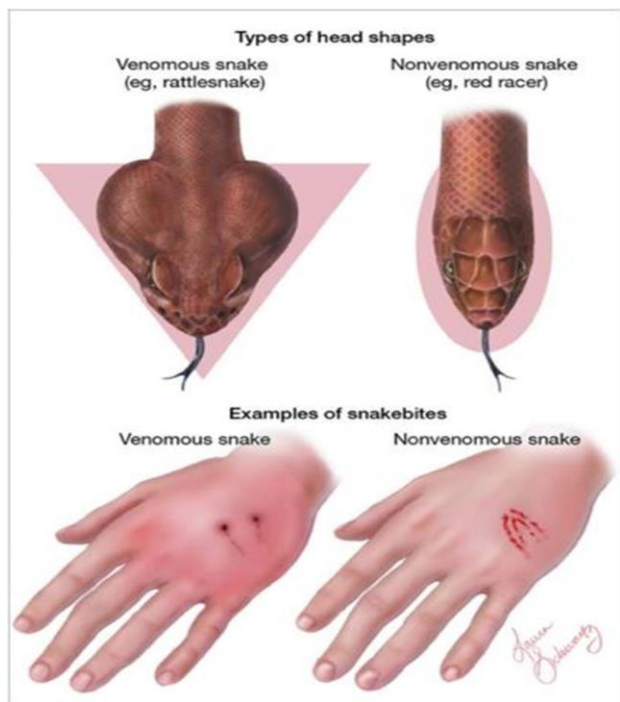
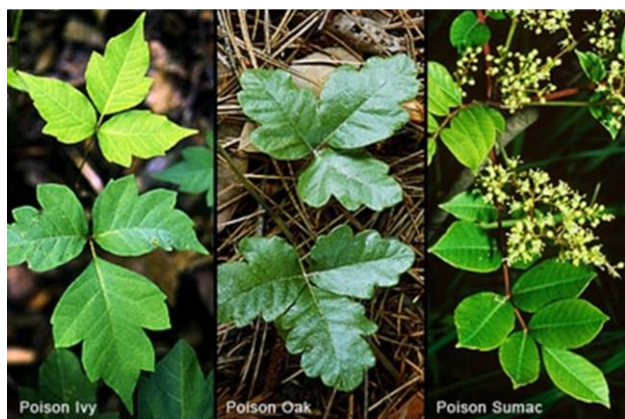
June 17th

Safety Tips

Stay hydrated, carry extra water, and make sure you have the air on in the patient compartment (unless it is a trauma)

Snakes are out. Do you know how to identify the snakes in our area?

<https://fisheries.tamu.edu/files/2013/10/Snakes-of-Missouri.pdf> As well as poison ivy, oak, and sumac?



Educational Resources

Have you tried to learn anything new lately?

<https://www.ems1.com/>

<https://www.jems.com/>

<https://www.emsworld.com/>

<https://nemsis.org/>

Upcoming Classes through our Education Department

June 24th – PALS part 1

June 28th – PALS part 2

July 1st – Obstetrics

July 8th – Neonate Care

July 12th – Gynecologic Emergencies

July 15th – Genitourinary and Renal Emergencies

July 20th – Life Support Competencies

July 22nd – Abdominal and Gastrointestinal Emergencies

July 24th – PHTLS day 1

July 25th – PHTLS day 2

If you have any suggestions, for educational podcasts, let a Crew Leader or Supervisor know and we can get it added.