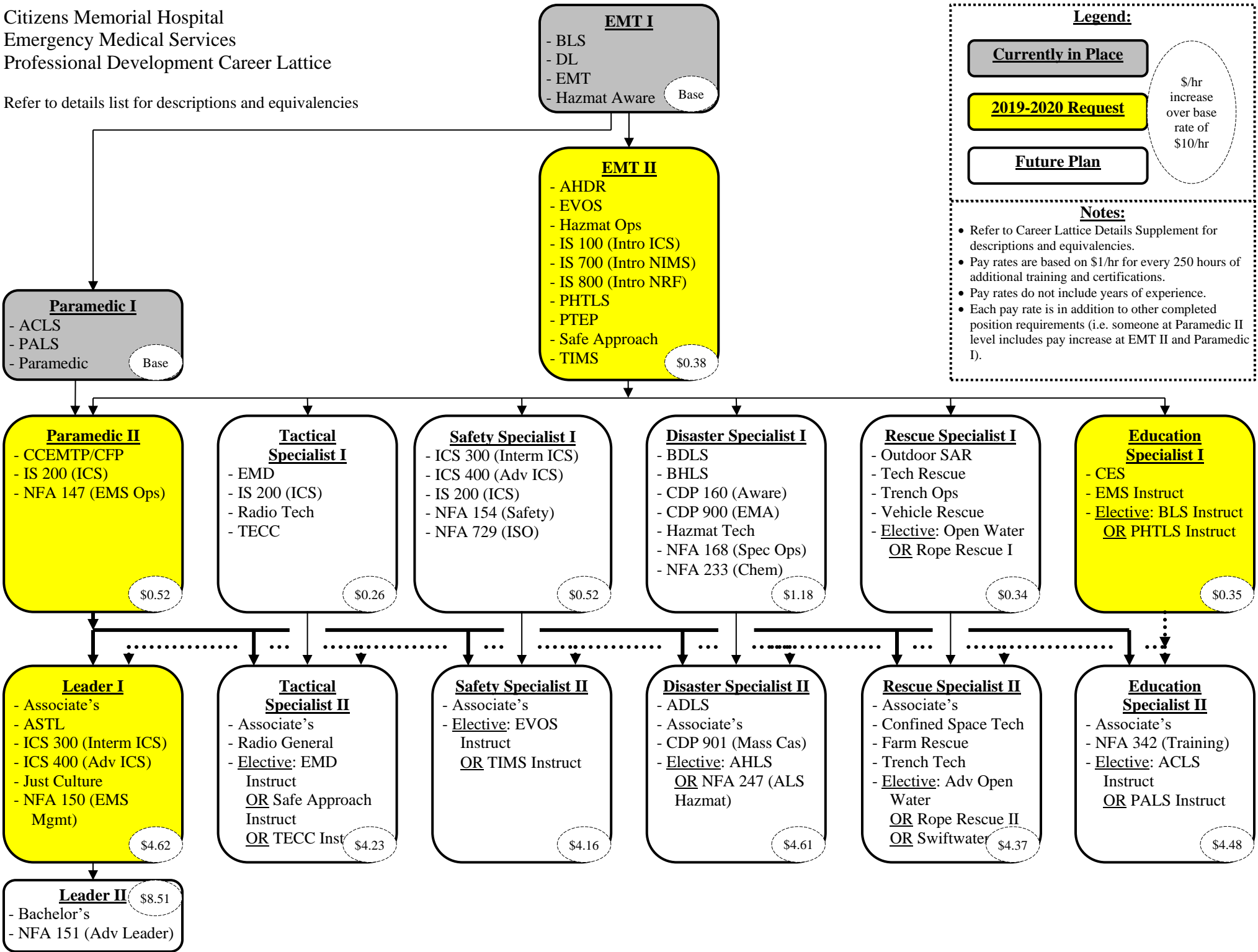


Citizens Memorial Hospital
 Emergency Medical Services
 Professional Development Career Lattice

Refer to details list for descriptions and equivalencies



Legend:

- Currently in Place** (Grey box)
- 2019-2020 Request** (Yellow box)
- Future Plan** (White box)

Notes:

- Refer to Career Lattice Details Supplement for descriptions and equivalencies.
- Pay rates are based on \$1/hr for every 250 hours of additional training and certifications.
- Pay rates do not include years of experience.
- Each pay rate is in addition to other completed position requirements (i.e. someone at Paramedic II level includes pay increase at EMT II and Paramedic I).

\$/hr increase over base rate of \$10/hr